

Get
Connected
SC

BETTER
INTERNET
FOR A
BETTER
SOUTH
CAROLINA

Rural Broadband: Closing the Digital Divide

South Carolina Office of Regulatory Staff
South Carolina Department of Administration

March 7, 2023

McMaster, Clyburn celebrate milestone of 100K homes provided high-speed internet access

BY SEANNA ADCOX SADCOX@POSTANDCOURIER.COM

OCT 3, 2022

1 of 2



U.S. Rep. Jim Clyburn, South Carolina's senior congressman and only elected Democrat in Washington, and Gov. Henry McMaster, a Republican seeking re-election, appeared together in the governor's Statehouse office Monday, Oct. 3, 2022, to celebrate bipartisan efforts to expand access to high-speed internet statewide. Seanna Adcox/Staff

BY SEANNA ADCOX SADCOX@POSTANDCOURIER.COM

BUY NOW

and



BROADBAND OFFICE

2022 Year in Review

September 30, 2022

Served and Unserved Areas

Speed Tiers (download / upload)

- >= 100 Mbps / 100 Mbps (symmetric)
- >= 100 Mbps / 20 Mbps
- >= 25 Mbps / 3 Mbps

Unserved Housing Units

- 100 or More
- 26 - 99
- 11 - 25
- 1 - 10
- Zero

Best Available Technology

- Fiber | Speeds >= 100 Mbps/100 Mbps (symmetric)
- Cable (DOCSIS 3.1+) | Speeds >= 100 Mbps/100 Mbps
- Cable (DOCSIS 3.0) | Speeds >= 100 Mbps/20 Mbps
- Cable (DOCSIS < 2.0), All Other | Speeds >= 25 Mbps/3 Mbps
- VDSL (Fiber-To-The-Curb) | Speeds >= 10 Mbps/1 Mbps
- ADSL2, ADSL2+ | Speeds >= 6 Mbps/1 Mbps
- Fixed Wireless | Speeds >= 10 Mbps/1 Mbps
- ADSL, all other Copper | Speeds >= 3 Mbps/768 kbps
- No Internet Service Available

Data 2021: Based on SC Broadband Office (SCBBO) analysis of FCC Form 477, Dec. 31, 2020 (pub. Oct. 29, 2021). In addition, multiple Internet Service Providers (ISPs) reported their FCC Form 477, Jun. 30, 2021 data to augment and update the base dataset. Demographic data based on US Census 2010 information that was enhanced with E911 premise-level information through Jun. 30, 2020. Ookla Speedtest Intelligence® data from Jan. 1, 2019 through Jun. 30, 2021 combined for analysis in the region.

Data 2022: Based on SCBBO analysis of FCC Form 477, Dec. 31, 2021 (pub. Dec. 29, 2022). In addition, multiple ISPs reported their FCC Form 477, Jun. 30, 2022 data to augment and update the base dataset. Demographic data based on FCC Broadband Serviceable Locations as of Dec. 2022. Speedtest Intelligence data from Jan. 1, 2019 through Sep. 30, 2022 combined for analysis in the region.

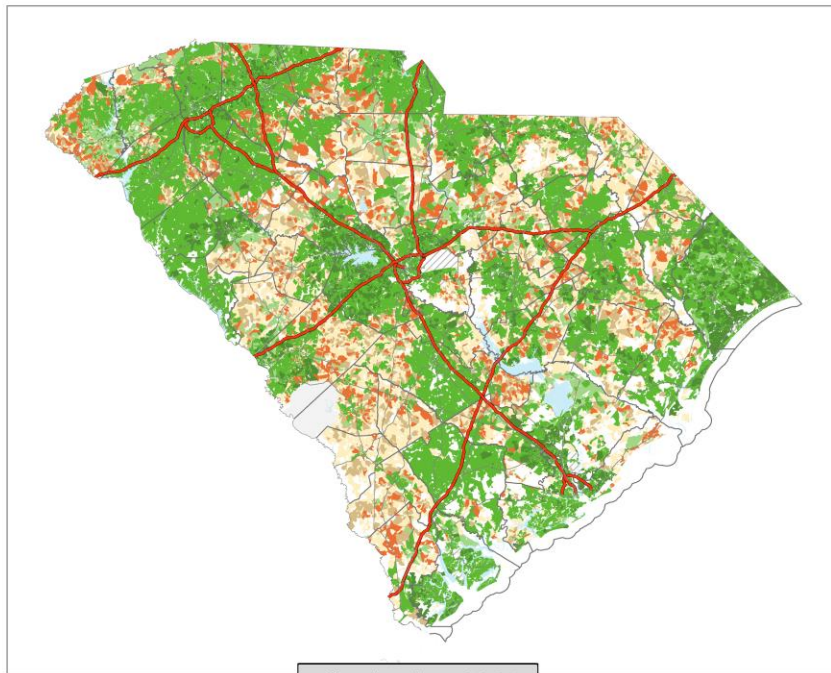
Satellite and mobile broadband services excluded.

The SCBBO is neither responsible nor liable for damages or injuries caused by failure of performance, error, omission, inaccuracy, inaccessibility, incompleteness or any other errors in information or formatting on this map. This map is for general reference only.

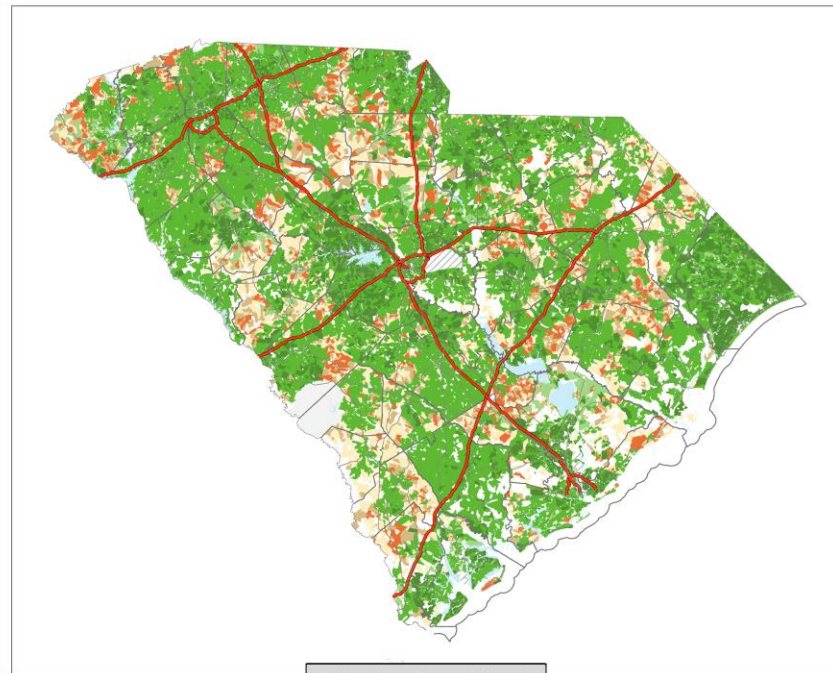
Ookla trademarks used under license with permission.

Submit comments or questions to maps@ors.sc.gov

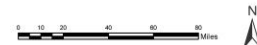
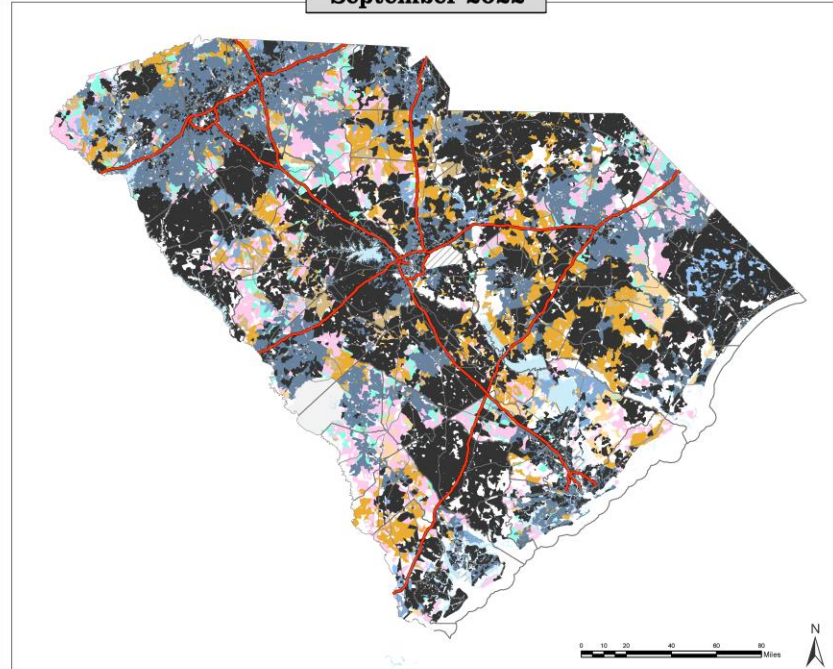
© Copyright 2023 SC Broadband Office
South Carolina Office of Regulatory Staff.
All Rights Reserved.



September 2021



September 2022



South Carolina

Best Available Technology

September 30, 2022

Best Available Technology (type | capability)

- Fiber | Speeds \geq 100 Mbps/100 Mbps (symmetric)
- Cable (DOCSIS 3.1+) | Speeds \geq 100 Mbps/100 Mbps
- Cable (DOCSIS 3.0) | Speeds \geq 100 Mbps/20 Mbps
- Cable (DOCSIS $<$ 2.0) | Speeds \geq 25 Mbps/3 Mbps
- VDSL (Fiber-To-The-Curb) | Speeds \geq 10 Mbps/1 Mbps
- ADSL2, ADSL2+ | Speeds \geq 6 Mbps/1 Mbps
- Fixed Wireless | Speeds \geq 10 Mbps/1 Mbps
- ADSL | Speeds \geq 3 Mbps/768 kbps
- Consumer Complaint
- No Internet Service Available
- Zero Households

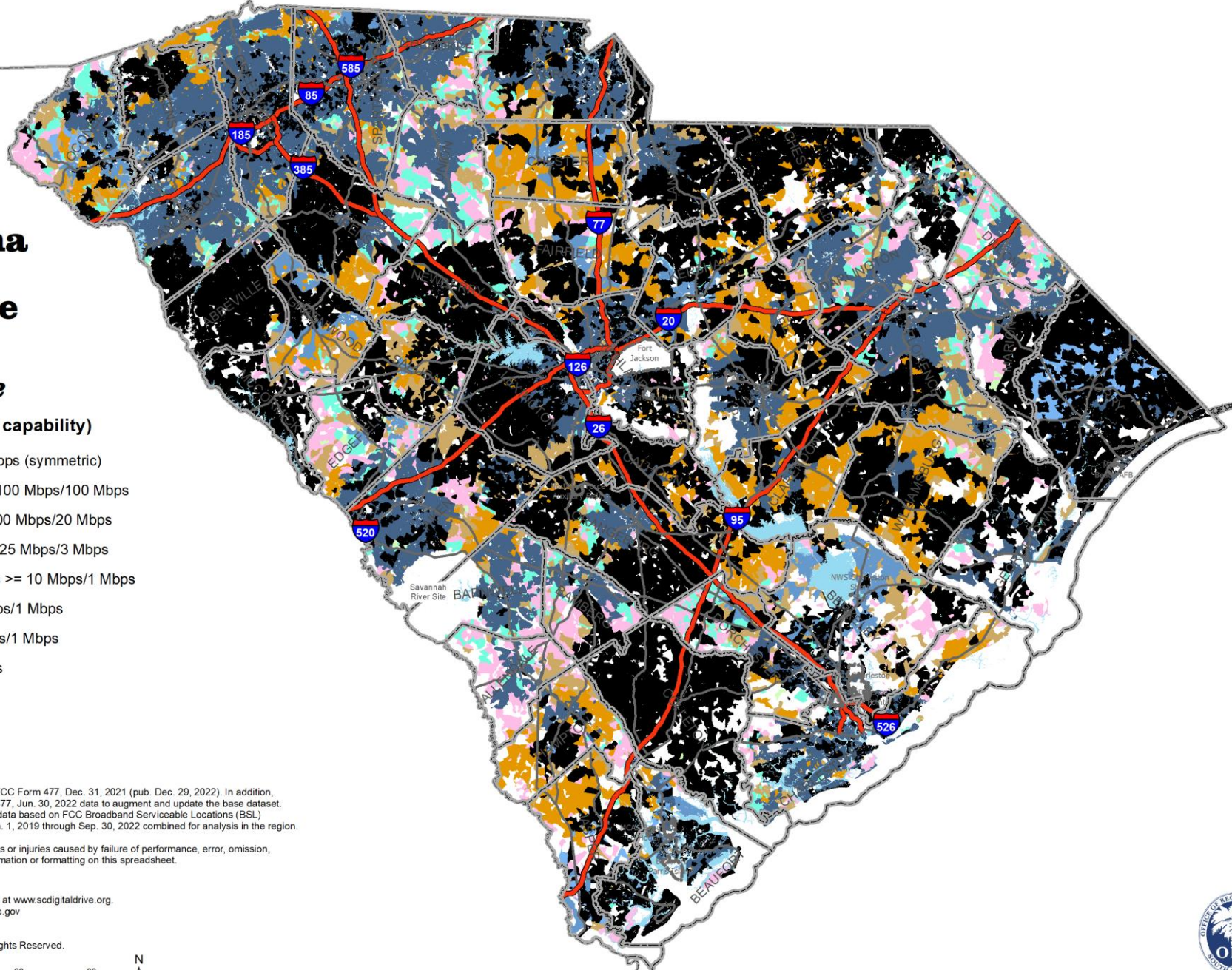
Data Sources: Based on SC Broadband Office (SCBBO) analysis of FCC Form 477, Dec. 31, 2021 (pub. Dec. 29, 2022). In addition, multiple Internet Service Providers have contributed their FCC Form 477, Jun. 30, 2022 data to augment and update the base dataset. Satellite and mobile broadband services are excluded. Demographic data based on FCC Broadband Serviceable Locations (BSL) Dec. 2022 information. Ookla® Speedtest Intelligence® data from Jan. 1, 2019 through Sep. 30, 2022 combined for analysis in the region.

The SC Broadband Office is neither responsible nor liable for damages or injuries caused by failure of performance, error, omission, inaccuracy, inaccessibility, incompleteness or any other errors in information or formatting on this spreadsheet.



Additional broadband information may be found at www.scdigitaldrive.org.
Submit comments or questions to maps@ors.sc.gov

© Copyright 2023 SC Broadband Office
South Carolina Office of Regulatory Staff. All Rights Reserved.



BROADBAND OFFICE

“Begin With the End in Mind”

Steven R. Covey, 7 Habits of Highly Effective People





Speed Tiers (download / upload)

	100 Mbps / 100 Mbps (symmetric)
	100 Mbps / 20 Mbps
	25 Mbps / 3 Mbps
	Zero Households

DON'T INVEST HERE

Green: Already served. Meets or exceeds FCC's 25/3 Mbps
White: Nobody lives there.

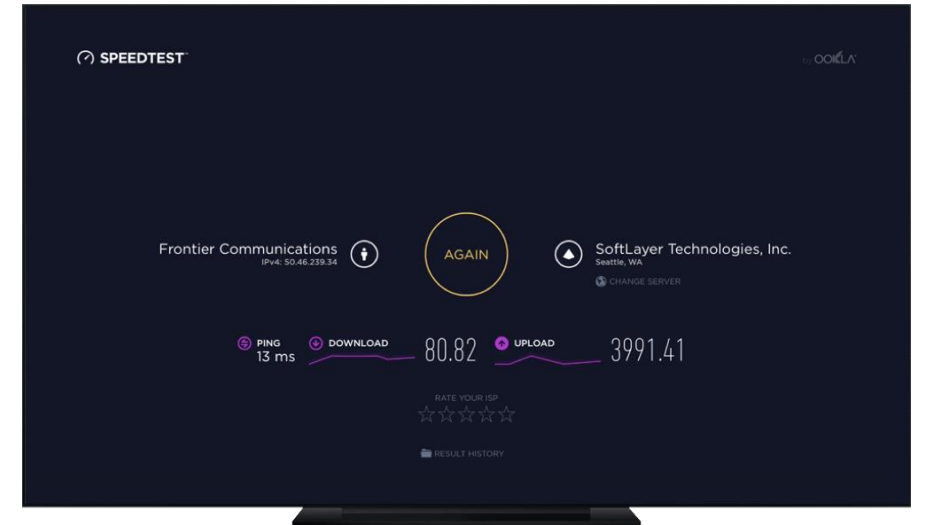
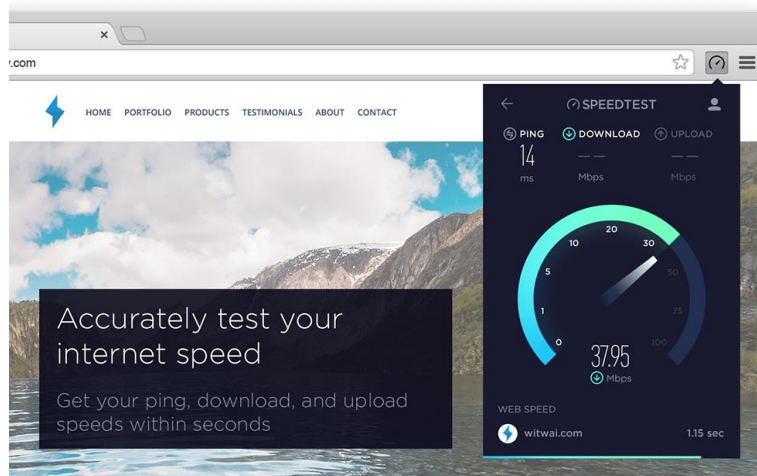
Unserved Housing Units

	100 or More
	26 - 99
	11 - 25
	1 - 10

INVEST HERE!

Find the “freckles” and prioritize them. Freckles are places with a lot of homes with poor Internet.

Ookla's mission is to make the internet better, faster and more accessible for everyone



iOS



Speedtest is available for:

Web, Android, iOS, macOS, Windows, AppleTV, Chrome

South Carolina

Areas of Need

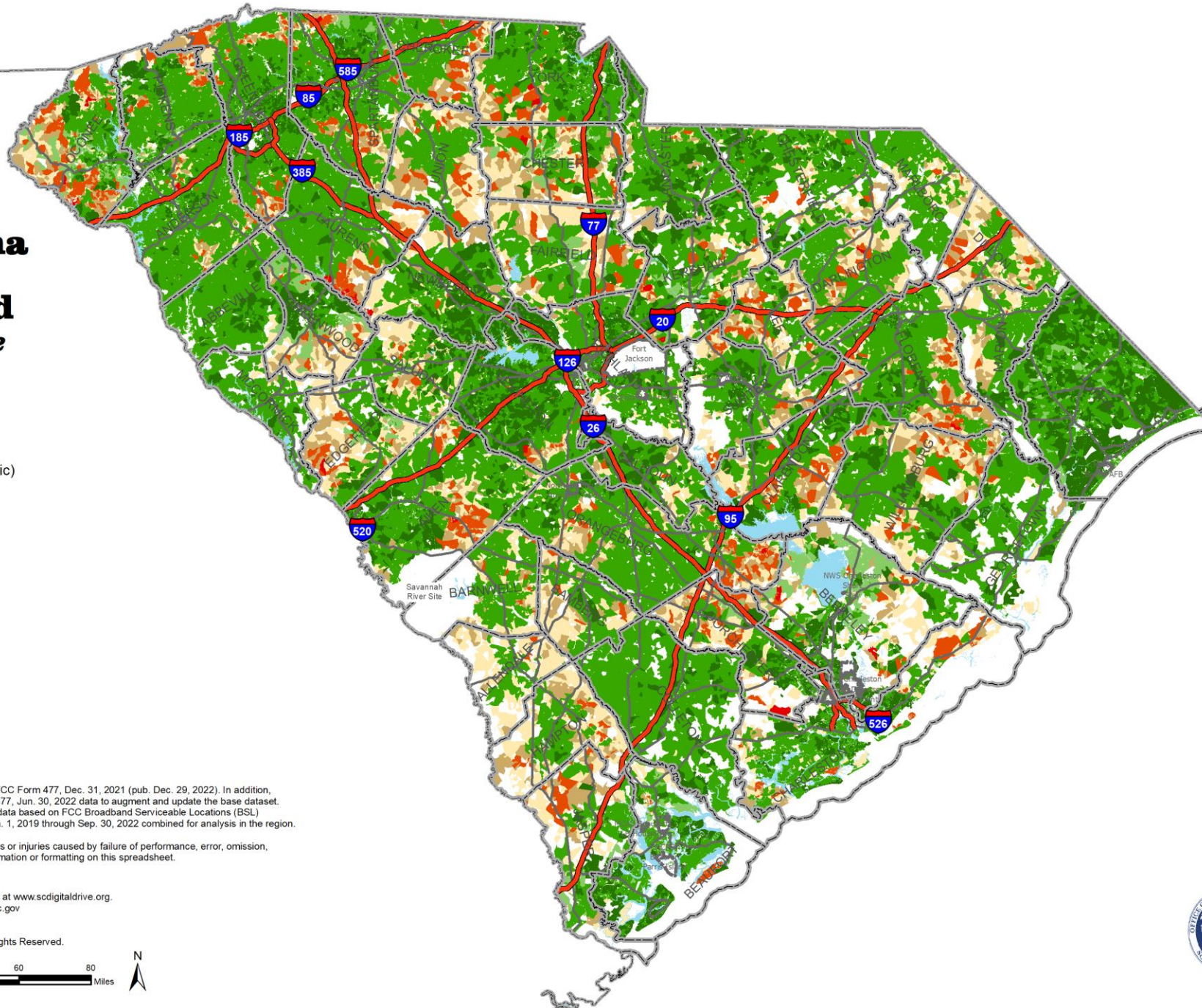
September 30, 2022

Speed Tiers (download / upload)

- >= 100 Mbps / 100 Mbps (symmetric)
- >= 100 Mbps / 20 Mbps
- >= 25 Mbps / 3 Mbps

Unserviced Housing Units

- 100 or more
- 26 - 99
- 11 - 25
- 1 - 10
- Zero



Data Sources: Based on SC Broadband Office (SCBBO) analysis of FCC Form 477, Dec. 31, 2021 (pub. Dec. 29, 2022). In addition, multiple Internet Service Providers have contributed their FCC Form 477, Jun. 30, 2022 data to augment and update the base dataset. Satellite and mobile broadband services are excluded. Demographic data based on FCC Broadband Serviceable Locations (BSL) Dec. 2022 information. Ookla® Speedtest Intelligence® data from Jan. 1, 2019 through Sep. 30, 2022 combined for analysis in the region.

The SC Broadband Office is neither responsible nor liable for damages or injuries caused by failure of performance, error, omission, inaccuracy, inaccessibility, incompleteness or any other errors in information or formatting on this spreadsheet.



Additional broadband information may be found at www.scdigitaldrive.org.
Submit comments or questions to maps@ors.sc.gov

© Copyright 2023 SC Broadband Office
South Carolina Office of Regulatory Staff. All Rights Reserved.



BROADBAND OFFICE

South Carolina

Planning

December 31, 2024

Speed Tiers (download / upload)

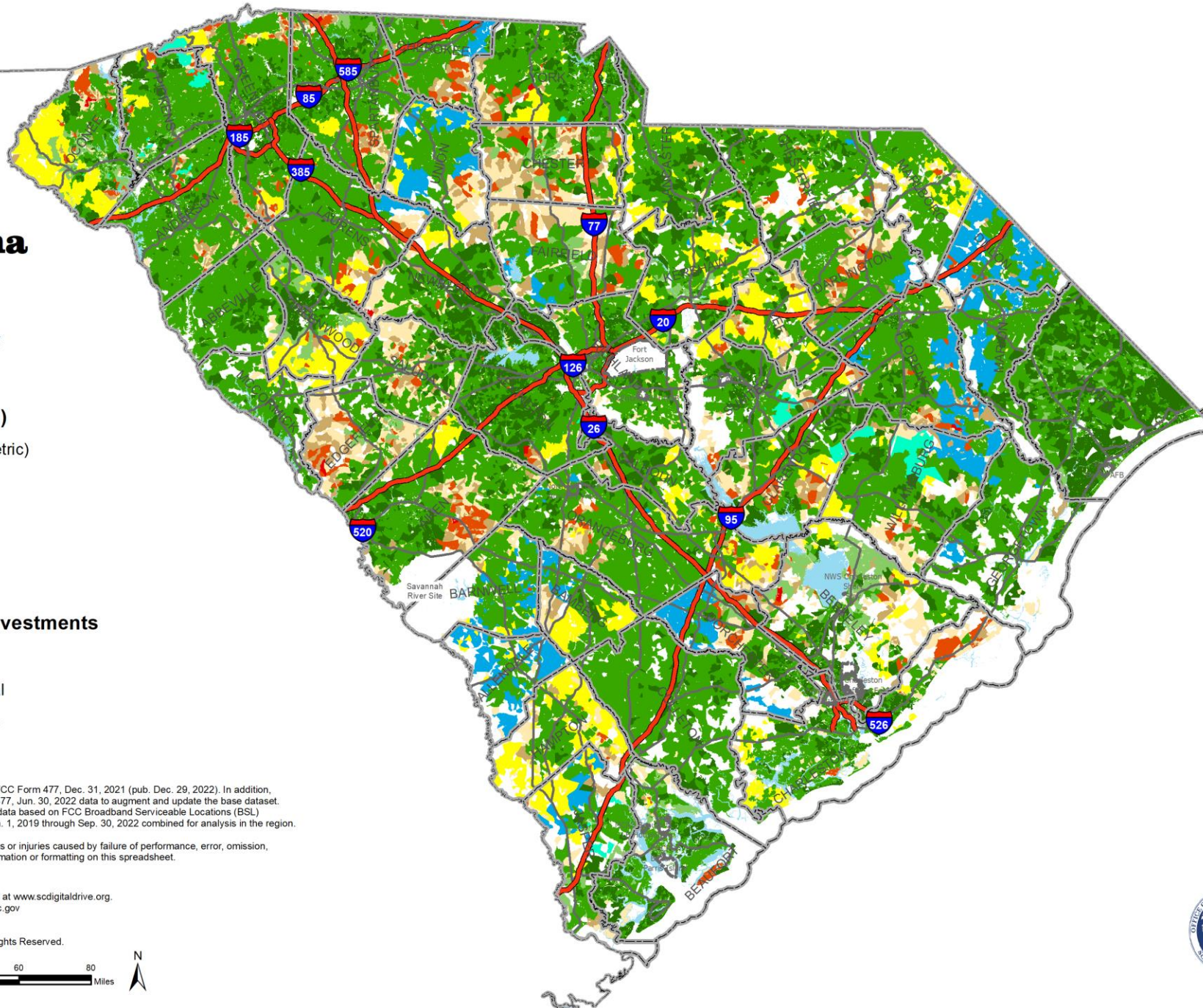
- >= 100 Mbps / 100 Mbps (symmetric)
- >= 100 Mbps / 20 Mbps
- >= 25 Mbps / 3 Mbps

Unserviced Housing Units

- 100 or More
- 26 - 99
- 11 - 25
- 1 - 10
- Zero

Managed Investments

- State
- Federal
- Private



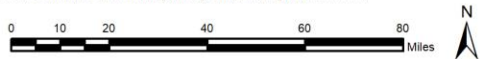
Data Sources: Based on SC Broadband Office (SCBBO) analysis of FCC Form 477, Dec. 31, 2021 (pub. Dec. 29, 2022). In addition, multiple Internet Service Providers have contributed their FCC Form 477, Jun. 30, 2022 data to augment and update the base dataset. Satellite and mobile broadband services are excluded. Demographic data based on FCC Broadband Serviceable Locations (BSL) Dec. 2022 information. Ookla® Speedtest Intelligence® data from Jan. 1, 2019 through Sep. 30, 2022 combined for analysis in the region.

The SC Broadband Office is neither responsible nor liable for damages or injuries caused by failure of performance, error, omission, inaccuracy, inaccessibility, incompleteness or any other errors in information or formatting on this spreadsheet.



Additional broadband information may be found at www.scdigitaldrive.org.
Submit comments or questions to maps@ors.sc.gov

© Copyright 2023 SC Broadband Office
South Carolina Office of Regulatory Staff. All Rights Reserved.



**BROADBAND
OFFICE**

South Carolina Statewide

Statistics

September 30, 2022



Population

Population estimates are calculated by multiplying Dec. 2022 FCC Broadband Servicable Locations (BSL) times an approximate residents per BSL.

Public K-12

K-12 student data reflects the subset of public school students which have been geocoded as of September 30, 2022. Student data was provided by the SC Department of Education.

Housing Units

A housing unit is a house, an apartment, a mobile home, a group of rooms, or a single room that is occupied (or if vacant, is intended for occupancy) as separate living quarters. Separate living quarters are those in which the occupants live and eat separately from any other persons in the building and which have direct access from the outside of the building or through a common hall. Dec. 2022 FCC BSL data is used in all calculations.

Qualified HU

Qualified Housing Units (HU) are located within Difficult Development Areas (Qualified Census Tracts) as determined by US Housing and Urban Development utilizing Census 2010 format. Census 2020 translation was done by the SC Broadband Office (SCBBO).

ACP

The Affordable Connectivity Program (ACP) is an FCC benefit program that helps ensure that households can afford the broadband they need for work, school, healthcare and more.

Data Sources: Based on SCBBO analysis of FCC Form 477, Dec. 31, 2021 (pub. Dec 29, 2022). In addition multiple Internet Service Providers have contributed their FCC Form 477 Jun. 30, 2022 data to augment and update the base dataset. Satellite and mobile broadband services are excluded. Demographic data based on FCC BSL Dec. 2022 information. ACP eligibility information provided by Education SuperHighway and enrollment reported by the Universal Service Administrative Company (USAC) through Sept. 30, 2022.

The SCBBO is neither responsible nor liable for damages or injuries caused by failure of performance, error, omission, inaccuracy, inaccessibility, incompleteness or any other errors in information or formatting on this map.

Additional broadband information may be found at www.scdigitaldrive.org.
Submit comments or questions to maps@ors.sc.gov



BROADBAND OFFICE

© Copyright 2023 SC Broadband Office
South Carolina Office of Regulatory Staff. All Rights Reserved.

US Census	Population		Housing Units	
2010	4,625,364		2,137,683	
2020	5,118,425	10.7%	2,344,963	9.7%
September 30, 2022	5,187,053	12.1%	2,488,040	16.4%

CURRENT	Current Below 25↓ Mbps Download / 3↑ Mbps Upload							
	Population		Public K-12		Housing Units		Qualified HU	
September 30, 2022	274,097	5.4%	34,696	4.7%	137,004	5.5%	17,744	13.0%

ACCESS					
Fiber		Cable		Copper	
1,257,047	50.5%	2,170,076	87.2%	2,026,228	81.4%

ADOPTION					
Fiber		Cable		Copper	
412,630	16.6%	1,201,871	48.3%	259,085	10.4%

ACP Enrollment							
Subscribers		Service		Device		Devices	
262,617	30.0%	\$5,853,217		\$517,419		5,189	

INVESTMENTS managed by:	Projected Investment Impact							
	Population		Public K-12		Housing Units		Qualified HU	
Federal	33,760		4,183		16,858		3,150	
State	84,836		10,489		42,892		5,245	
Private	6,738		749		3,271		186	
Total	125,334		15,421		63,021		8,581	

FUTURE	Remaining Below 25↓ Mbps Download / 3↑ Mbps Upload							
	Population		Public K-12		Housing Units		Qualified HU	
December 31, 2024	148,763	2.9%	19,275		73,983	3.0%	9,163	



SOUTH CAROLINA DIGITAL DRIVE

Tools and resources to inform consumers and stakeholders

Don't have access to internet? Take the

Search for maps by county and type

Current Total Housing Units

With At Least

25↓ Mbps / 3↑ Mbps Service

2,351,036*

Current Total Housing Units

Without

25↓ Mbps / 3↑ Mbps Service

137,004

South Carolina Broadband

SC Broadband County Dashboard | Broadband County Dashboard September 2022 Data

Private Member | Private Organization

Summary

Dashboard allows users to view general broadband statistics at the SC county level. Much of the data reflected in the Dashboard is based on Federal Communication Commission data submissions. The Dashboard uses data from Internet Service Providers (ISPs). Dashboard data is updated periodically - At a minimum 2 times per month. For questions about the Dashboard data, please contact the Broadband Office via info@ors.sc.gov.

View Full Details

Details

- Dashboard
- Dashboard
- February 6, 2023
Date Updated
- February 6, 2023
Published Date
- Public
Anyone can see this content
- No License Provided
Request permission to use

SC Broadband Dashboard September 2022 Data

Select a category Statewide

Percent of Housing Units in a Census Tract 09/30/2022
Meet (25Mbps / 3Mbps)

- 99.01% - 100%
- 97.01% - 99.00%
- 75.01% - 97.00%
- 60.01% - 75.00%
- 0% - 60.00%

Percent of Residential Addresses Served by Fiber in Statewide
53.35%

Percent of Residential Addresses Served by Cable in Statewide
43.72%

Estimated number K-12 Students
0
*That do not have at least 25 Mbps / 3 Mbps broadband

Total number of Funded Households
96,919

Total number of Unserved Households
137,004
*That DON'T meet 25 Mbps / 3 Mbps

Total number of Served Households
2,351,036
*That meet the Min 25 Mbps / 3 Mbps

Percent of Residential Addresses Served by Copper in Statewide
1.84%

Percent of Residential Addresses Unserved in Statewide
5.51%

*Note copper technology is considered Unserved

Powered by Esri

AMERICAN RESCUE PLAN ACT

Act 244 (H. 4408) \$400 Million for SC Broadband Infrastructure

Enacted
May 13, 2022

State Fiscal Recovery Fund

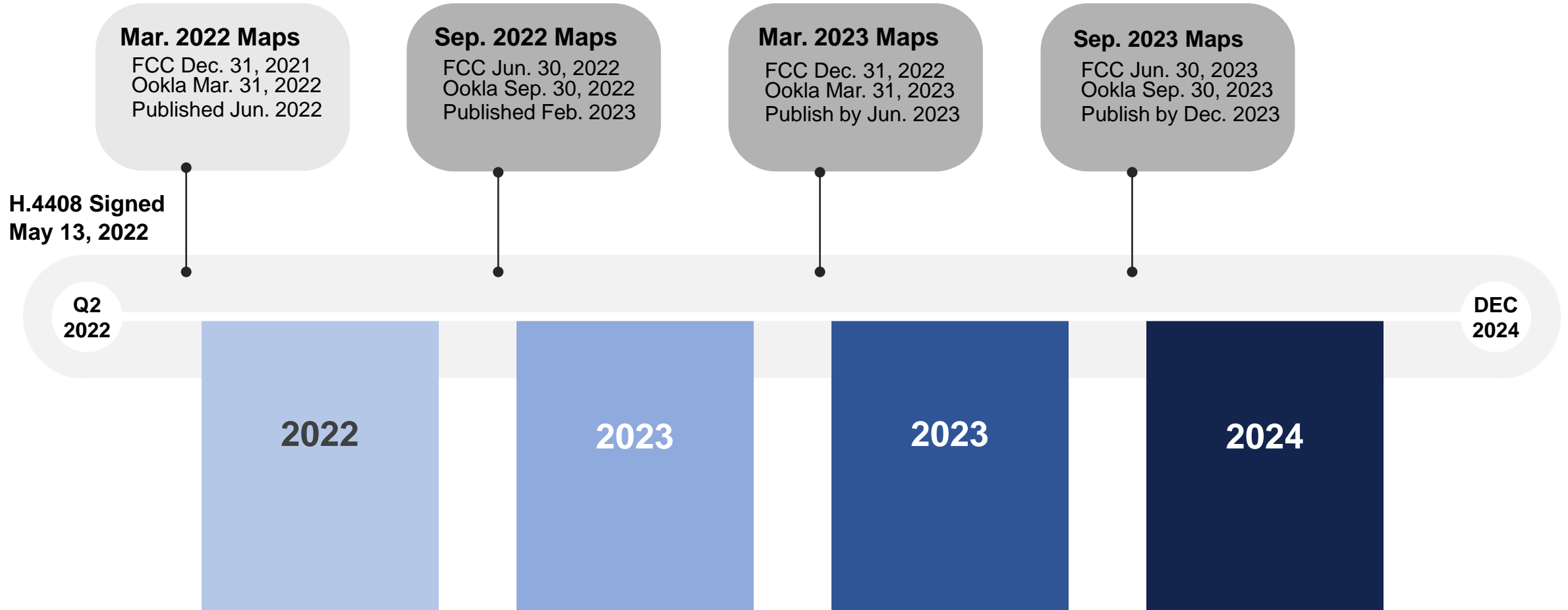
- \$214.2 Million

Capital Projects Fund

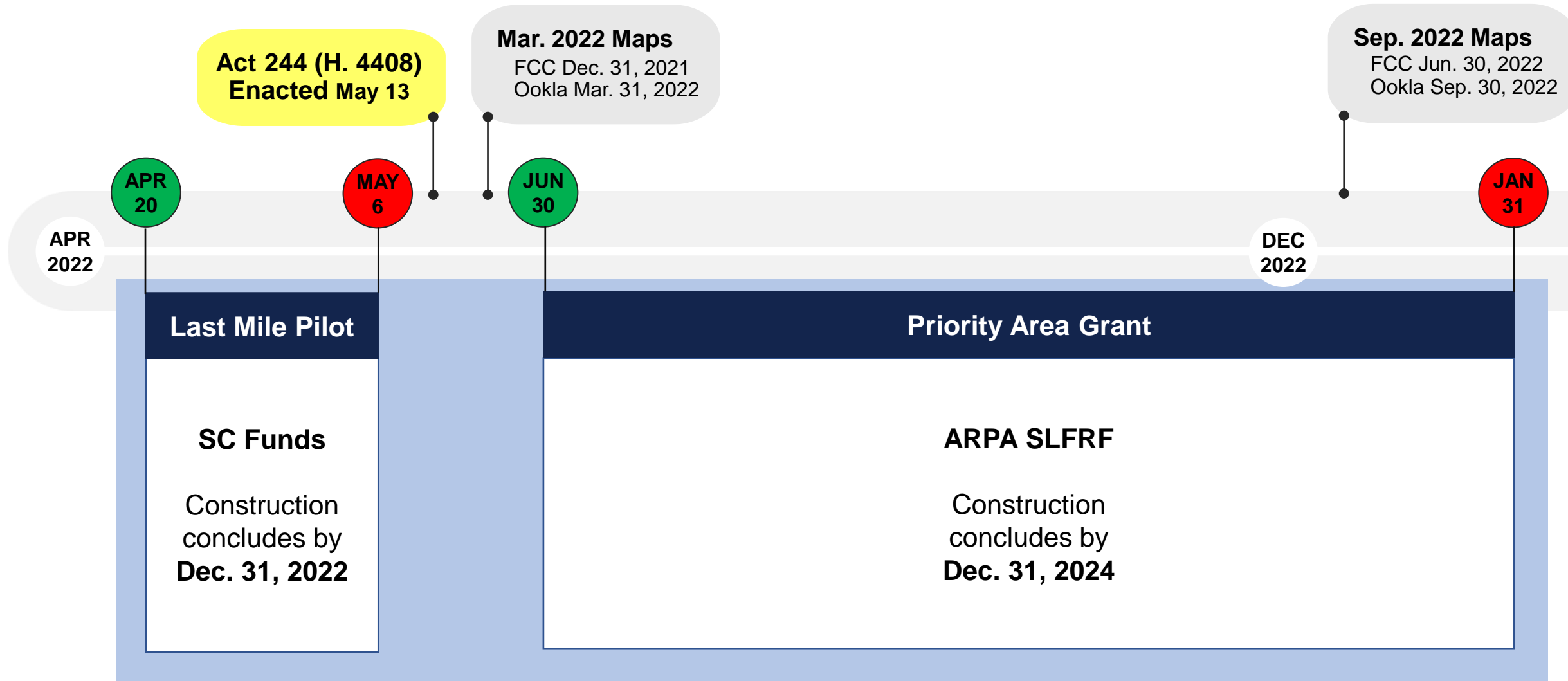
- \$185.8 Million

The funds in the ARPA Broadband Account shall be used to expand broadband infrastructure to households, businesses, and communities in the State that are unserved or underserved by broadband services.

SC BROADBAND INVESTMENT ROADMAP



2022 SC BROADBAND GRANT PROGRAMS



* All dates are pending approval and are subject to change without notice.



What are Priority Areas?

Unserved 2020 Census Blocks with:

1) More than 20 public K-12 student households; **or,**

- ✓ Broadband maps include data from 785,000 public school students that was provided by SC Department of Education

2) Difficult Development Areas as identified by US Housing and Urban Development (HUD); **or,**

- ✓ Defined geographies that are updated annually by HUD and are the basis for deploying Community Development Block Grants (CDBG) in the United States.

3) No Internet Service Provider (ISP)

- ✓ FCC Form 477 data shows null value for ISP as of Dec. 31, 2021.

Source: H.4408, Section 9: Priority must be given to unserved areas with no current Internet Service Provider, Difficult Development Areas as identified by U.S. Housing and Urban Development, and census blocks that have a high concentration of unserved public K-12 student households as documented by the South Carolina Department of Education.

AMERICAN RESCUE PLAN ACT

Act 244 (H. 4408) \$400 Million for SC Broadband Infrastructure

Enacted
May 13, 2022

State Fiscal Recovery Fund

- \$214.2 Million

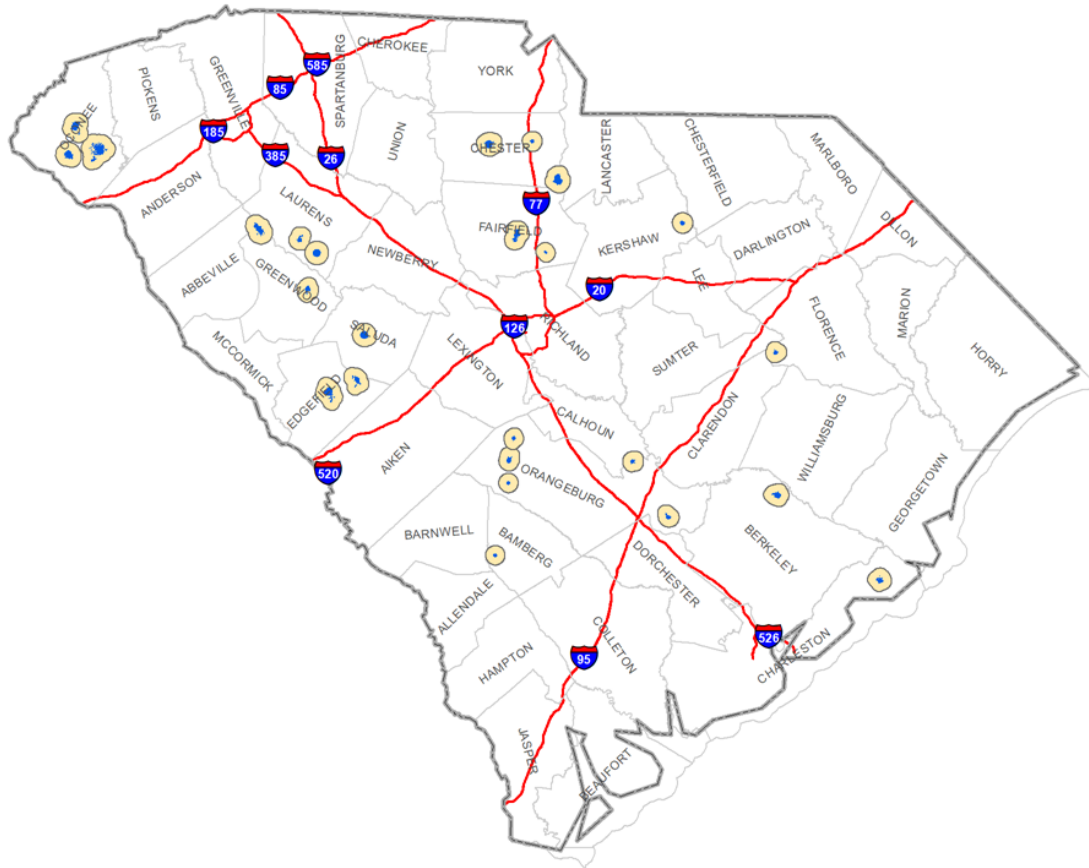
Capital Projects Fund

- \$185.8 Million

The funds in the ARPA Broadband Account shall be used to expand broadband infrastructure to households, businesses, and communities in the State that are unserved or underserved by broadband services.

**THE
NEXT, NEXT
GREATEST
THING**

Main Street, South Carolina



1. Add Main Street Priority Areas

- Main St + 2mi buffer

2. Requires 100/100 Symmetric

3. “Dig Once” Opportunities

- Water & Sewer (RIA)
- Roads (SCDOT)

South Carolina Broadband Office - BEAD and DE Relationship

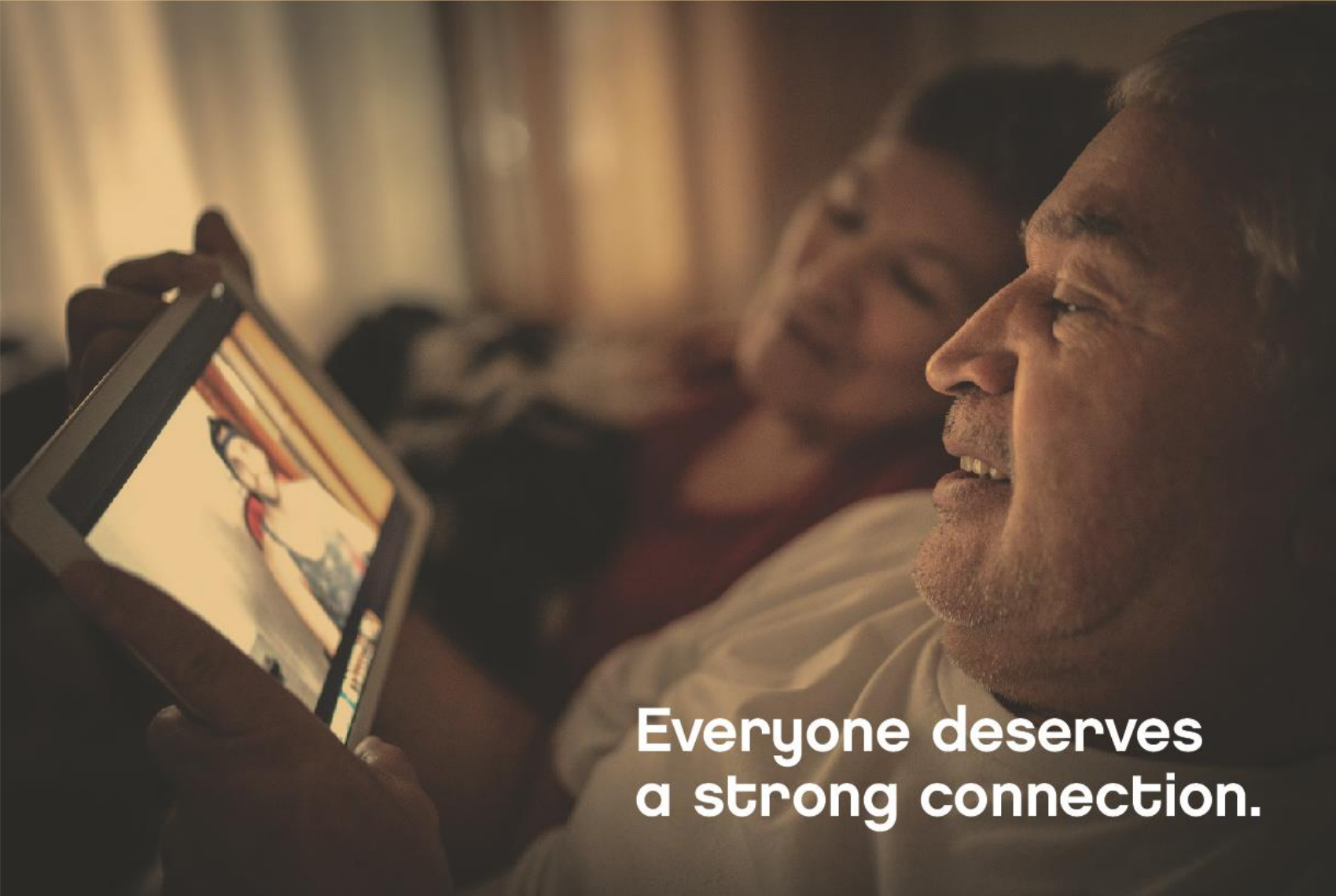


**BROADBAND
OFFICE**



**DIGITAL EQUITY
OFFICE**

- The Digital Equity staff will work in close collaboration with the Office of Regulatory Staff and the South Carolina Broadband Office.
- For both programs to succeed, working together will be crucial. We plan to be lockstep to ensure South Carolina leads in bridging the digital divide.



Everyone deserves
a strong connection.

GetConnectedSC.org

**Get
Connected
SC**

**BETTER
INTERNET
FOR A
BETTER
SOUTH
CAROLINA**



SCAN CODE
or visit
GetConnectedSC.org

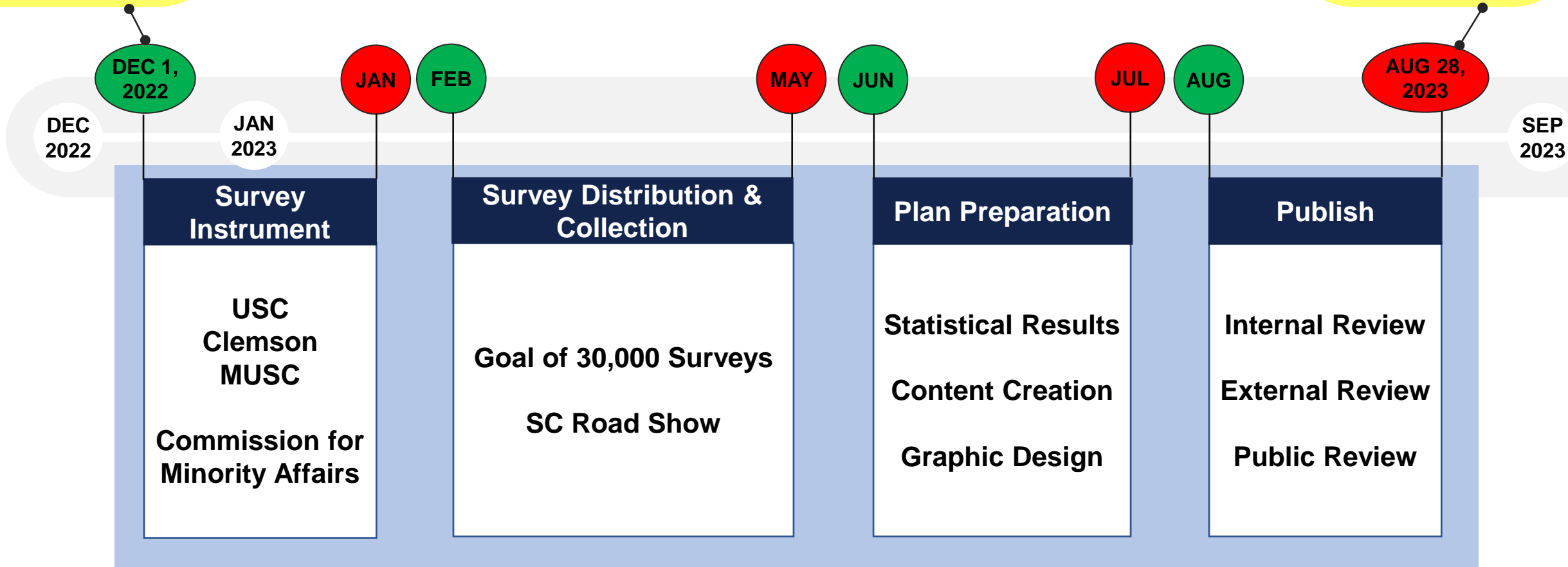
YOUR INPUT = BETTER INTERNET

BEAD / DE Planning Process

BEAD / DEA
Planning Funds
Received

270-Day Shot Clock from Fund!

5-Year Plan Due
to NTIA



Thank you!

**Get
Connected
SC**

BETTER
INTERNET
FOR A
BETTER
SOUTH
CAROLINA

Jim Stritzinger
Director, SC Broadband Office
SC Office of Regulatory Staff (ORS)
jstritzinger@ors.sc.gov

Office: (803) 737-0825
Mobile: (803) 606-6398

Mike Shealy
Director, SC Digital Equity Office
SC Department of Administration (Admin)
mike.shealy@admin.sc.gov

Office: (803) 612-9057
Mobile: (803) 315-4449

GetConnectedSC.org